



Ann Kingstone

ERRATA FOR SNOW BUNNY

These errata are for the pattern as published by Lark Books in the 'Joy of Sox'.

The charts in the book have been rendered in such a way that:








- All the decrease slants have been flipped. The symbol for ssk is used where k2tog should be worked, and vice versa.
- If the symbol slant was accurate the arrangement of the leg charts would have the final decrease in the round straddling the round end and round beginning.
- The stitches that are eaten by decreases have not been omitted as they should be in the round where the decreases are worked.
- The insertion points for extra girth stitches are not shown.

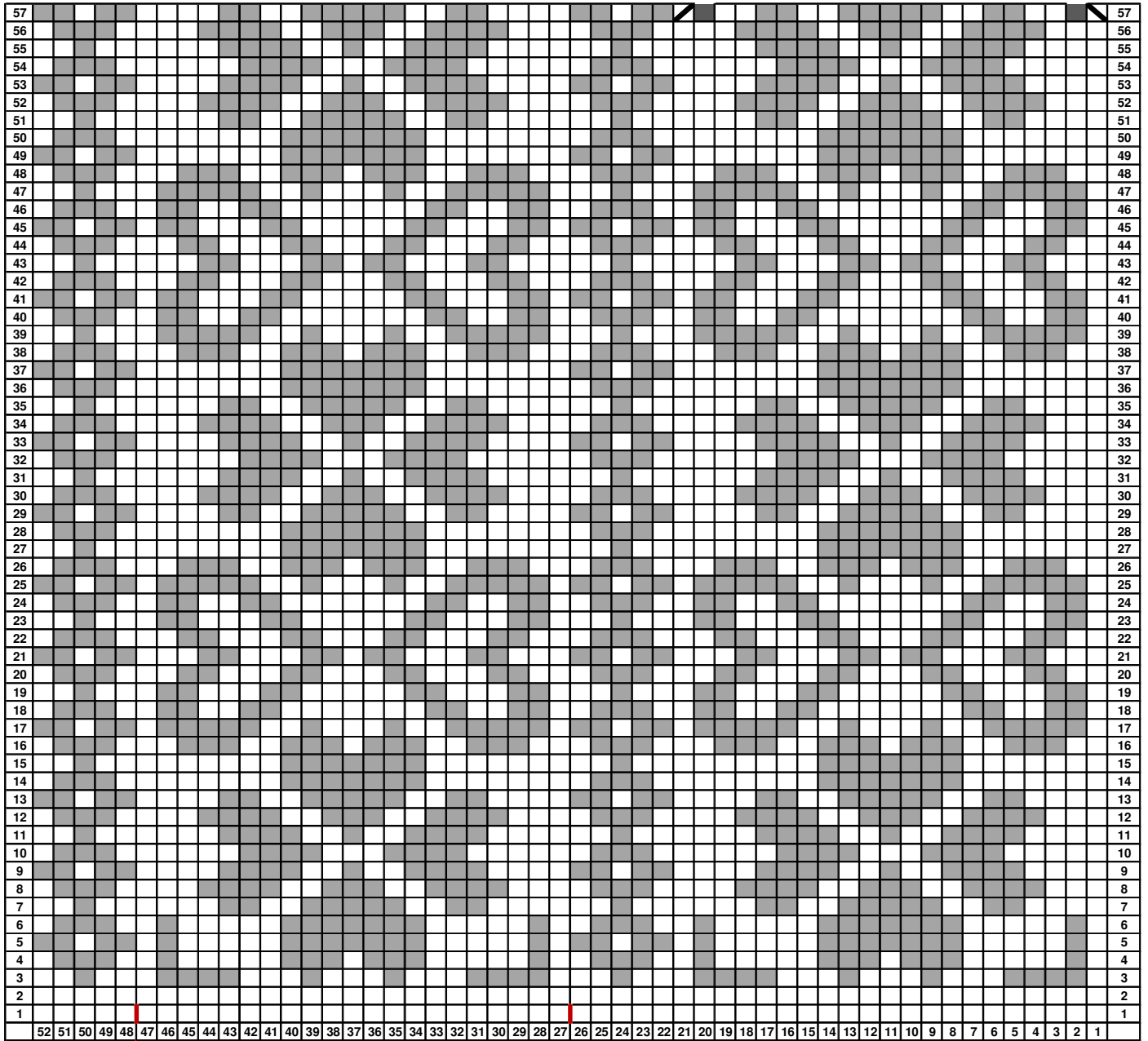
Therefore please use the leg charts as given below. In these charts:

- The round commences a stitch earlier than on the charts in the book. This is in order to accommodate all the decreases in the round (i.e. so that no decreases straddle round end and beginning).
- The symbol slants and key are accurate.
- For the main size stitch boxes have been omitted in the round where the decreases occur that eat those stitches. Therefore work all the stitches shown in these charts.
- The insertion points for extra girth stitches are shown. In each round please work a quarter of the extra stitch count at each of these points. Work all extra stitches in colour A.
- The extra girth decreases are shown in red (not white as in the book). Count back from round 101 to calculate where to commence the extra decreases. Each decrease round reduces the stitch count by 4 stitches.
- After round 131 knit the next 5 stitches in B before turning to work the heel. (not 4 as in the book).

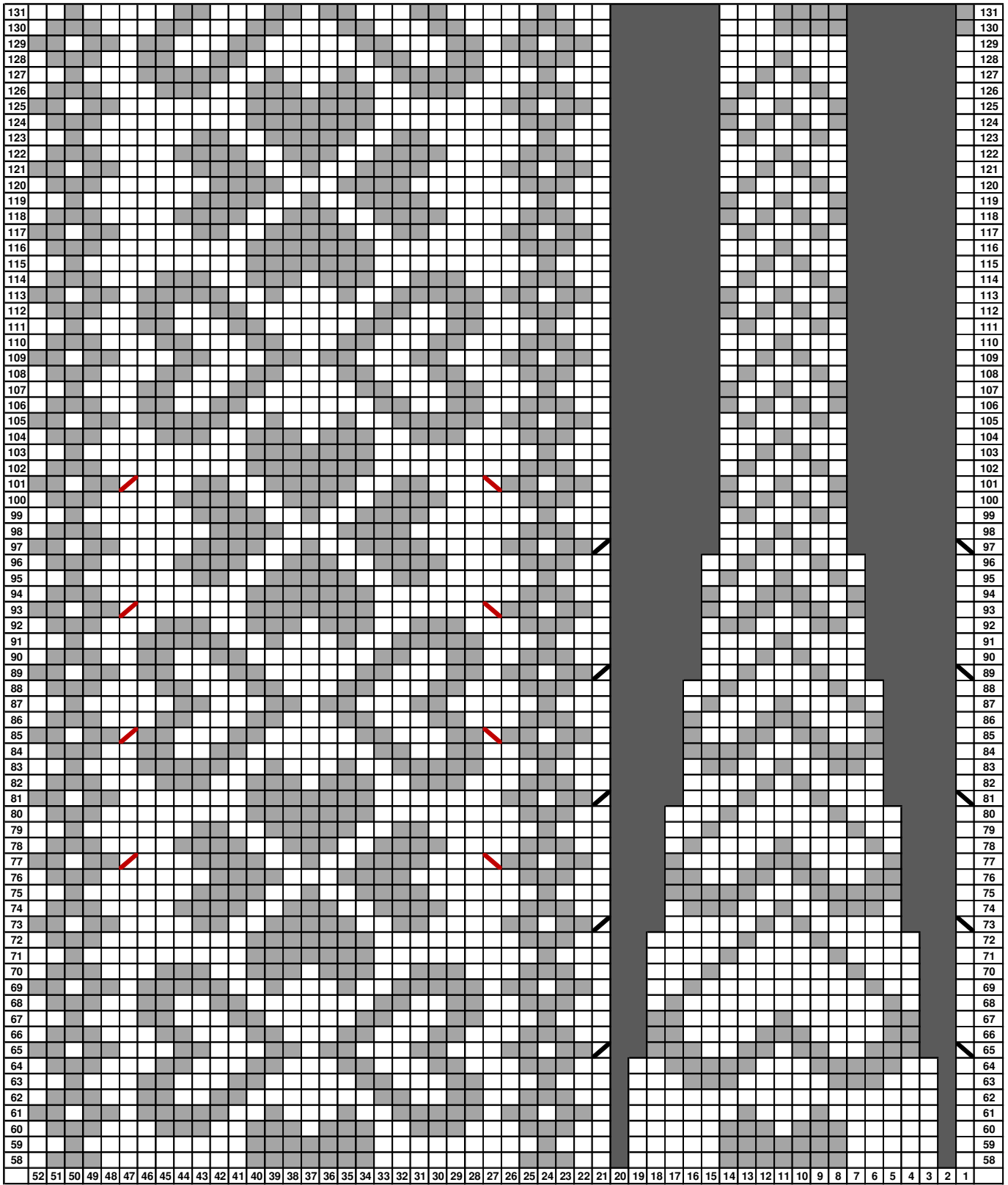
When following the book charts for the toe please note that:

- The symbols slant the wrong way; the first decrease on the upper toe should be ssk and the second should be k2tog.
- The stitches that are eaten by these decreases have not been omitted from the charts until two rounds later. Therefore, please skip a stitch box after the ssk and before the k2tog and skip stitch boxes in the same place in the following round.
- The frequency of decrease rounds given on the charts is inconsistent whereas they should be every alternate round until 7 rounds before the end of the toe. From this point there are toe decreases in every round. Please alter the way you work accordingly.

Key	
	no stitch
	A (pink)
	B (black)
	ssk
	k2tog
	ssk (larger sizes only)
	k2tog (larger saizes only)



Extra girth stitches to be inserted here.



Heel set-up chart; follow this chart for the latter half of rounds 126 to 131:

